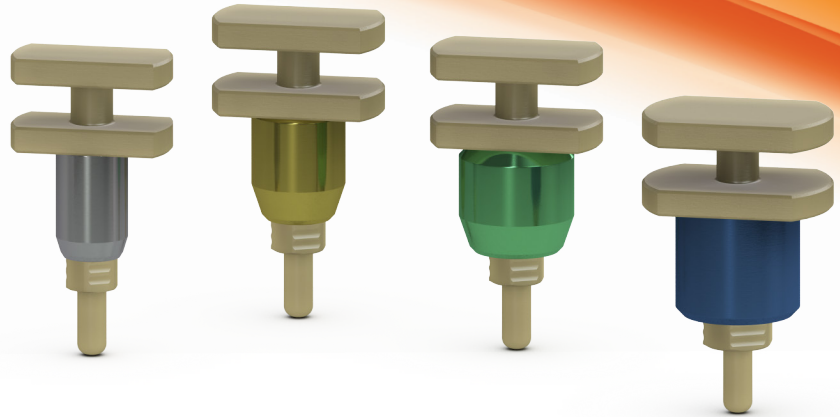


accurate impressions in a snap

The snap coping offers an accurate implant-level impression for single or multiple units with an easy to use closed tray, pick-up technique.



one-piece design

Coping easily snaps into prosthetic platform by hand, without the need for additional instruments.

radiopaque ring

Color-coded titanium ring used to verify seating on a radiograph. Emergence matches the emergence of the corresponding healing abutment.

low profile

Short 9.5mm coping height can be reduced further to 6.5mm by removing the top flange without compromising the accuracy of the impression.

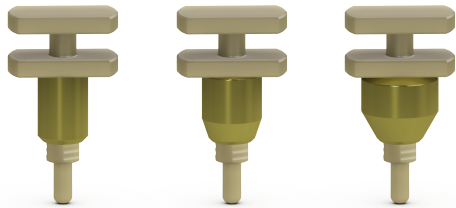


Clinical image courtesy of Dr. Neal Gittleman

for detailed instructions download
the closed tray pick-up technique
using the snap coping module

www.biohorizons.com/prosthetic-techniques.aspx

ordering information



PYNSC

3.5mm platform (Narrow Emergence)

PYRSC

3.5mm platform (Regular Emergence)

PYWSC

3.5mm platform (Wide Emergence)



PGNSC

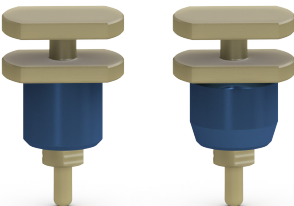
4.5mm platform (Narrow Emergence)

PGRSC

4.5mm platform (Regular Emergence)

PGWSC

4.5mm platform (Wide Emergence)

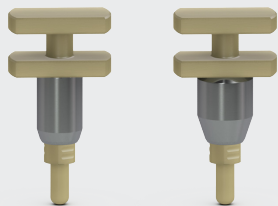


PBNSC

5.7mm platform (Narrow Emergence)

PBRSC

5.7mm platform (Regular Emergence)



TP3RSC*

3.0mm platform (Regular Emergence)

TP3WSC*

3.0mm platform (Wide Emergence)

**available early 2015*

Customer Care: 1.888.246.8338
visit us online at www.biohorizons.com

Product descriptions have been modified for presentation purposes.
Not all products shown are available in all countries. © BioHorizons. All Rights Reserved.

SPMP14253 REV A AUG 2014